

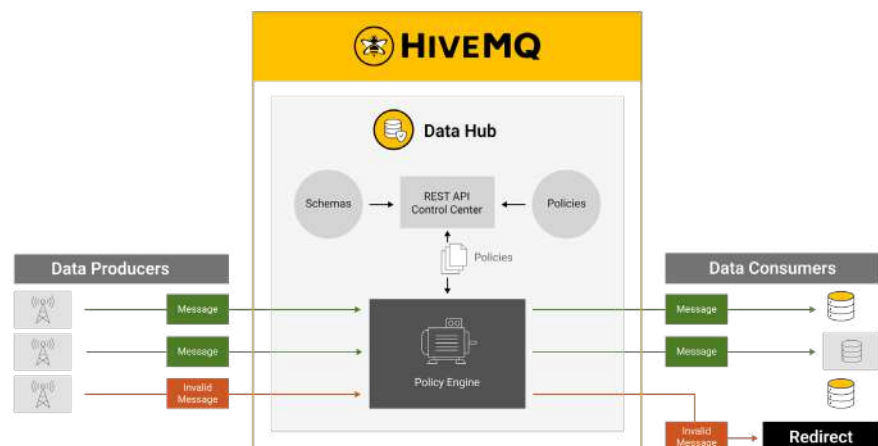
# Enhance the Value of Your IoT Data



HiveMQ Data Hub is an integrated policy and data transformation engine that validates, enforces, and manipulates data in motion to ensure data integrity and quality across your MQTT deployment. Data Hub enhances business insights with cleaner, high-quality data, ensures consistency through centralized rules, boosts operational efficiency by filtering out bad data, and reduces costs by minimizing storage and errors.

## Data Validation and Consolidation with HiveMQ Data Hub

HiveMQ Data Hub provides mechanisms to define how MQTT data is handled in the HiveMQ Broker or in HiveMQ Edge. This ensures that data quality is assessed at an early stage in the data supply chain, eliminating the need for subscribers to perform resource-intensive validation before data reaches downstream devices or upstream services.



## HiveMQ Customers



AIRFRANCEKLM  
GROUP

SIEMENS



Mercedes-Benz

# HiveMQ Data Hub is Optimized to Help Companies:

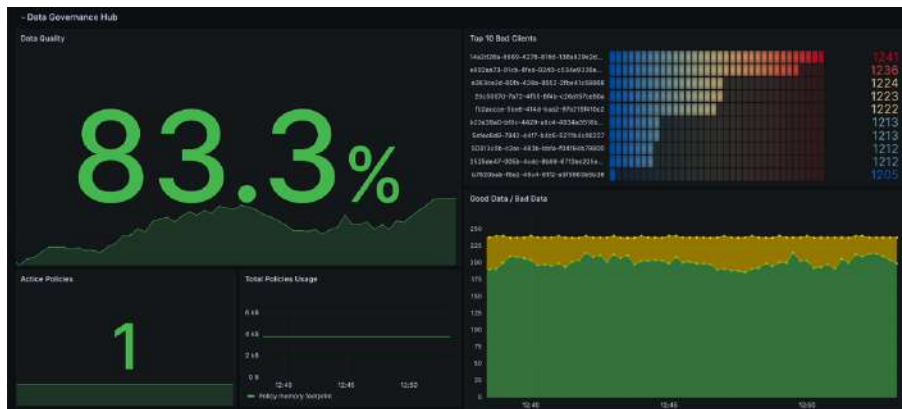
Achieve faster business insights by validating and standardizing data before it is sent to reduce noise.

Increase data quality by enforcing centrally defined rules for consistency across devices and messages.

Improve operational efficiency by blocking malfunctioning devices and ensuring only reliable data flows through the system.

Reduce costs by acting only on high-quality data, minimizing redundant processing and storage expenses.

## Key Capabilities of HiveMQ Data Hub



**Behavior Policies:** Manage device interactions with the MQTT broker by defining rules for logging, transforming, or blocking behaviors. Use JavaScript to implement custom flow controls.

**Data Transformation:** Manipulate data formats like JSON or Protobuf to enable seamless edge processing. Transformations include tasks like unit conversions.

**Schemas and Policies:** Create structured blueprints for incoming data formats with enforceable rules to ensure integrity, like defining valid temperature ranges.

**Modules:** Simplify setup with preconfigured modules that bundle schemas, policies, and transformations for real-time automation without custom coding.

**Visualization:** Manage and monitor data with a user-friendly dashboard that highlights quality metrics, identifies issues, and integrates with tools like Grafana for deeper insights.

**REST API:** Access the HiveMQ Data Hub programmatically via REST APIs to integrate with other applications and automate workflows.

To download HiveMQ and try Data Hub visit [www.hivemq.com/download](http://www.hivemq.com/download) →